



## Small Office Suite at the Maltex

431 Pine Street, Suite 215, Burlington, VT

<b>Location:</b>	Maltex Building	<b>Available:</b>	June 1, 2018
<b>Use:</b>	Office	<b>Parking:</b>	On-site
<b>Sizes:</b>	786 +/- sf	<b>Price:</b>	\$15.50/SF NNN (\$5.72/SF) plus gas, electric

The popular Maltex building has a small suite coming on line for June 1st. Second floor location known as suite 215. Approximately 786 SF and filled with old mill ambiance. The Maltex offers on site parking, common mail room, and common areas for relaxing or having informal meetings.

- Easy to find location.
- The Maltex building is located in the South End of Burlington
- ADA compliant building.
- Wide open big room with a window and a single private office with window & storage room
- North - natural light.

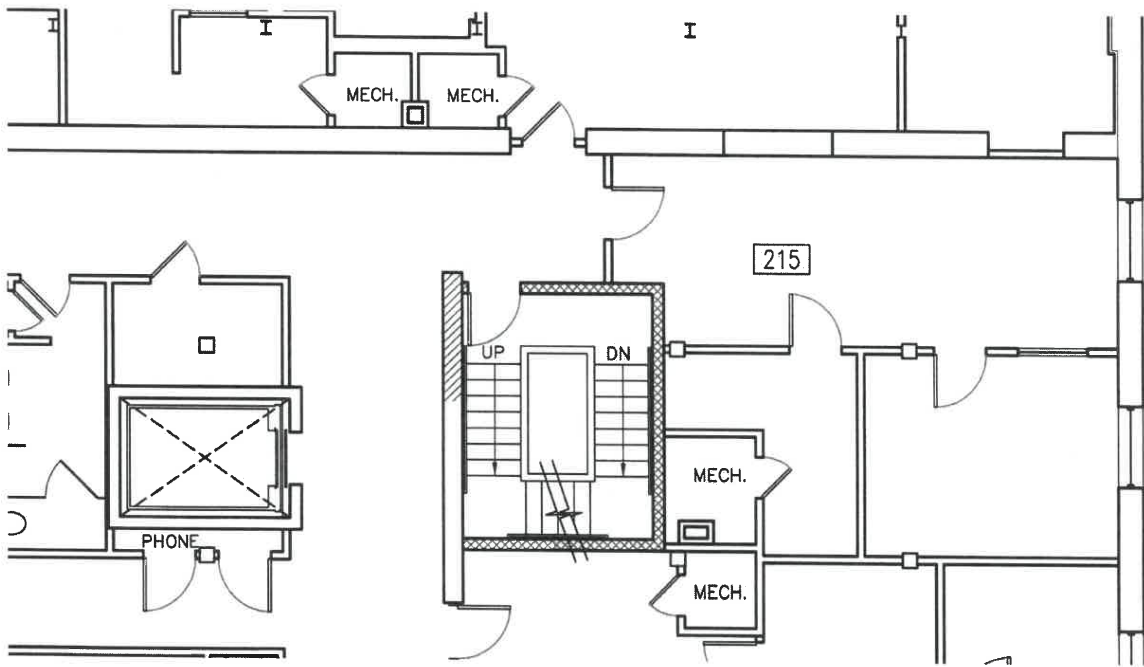
**Call or email Linda I Letourneau for more information:**

802-343-2107 [linda@vtcommercial.com](mailto:linda@vtcommercial.com) [www.vtcommercial.com](http://www.vtcommercial.com)

186 College Street, Burlington, Vermont 05401  
 Information contained herein is believed to be accurate, but is not warranted.  
 This is not a legally binding offer to sell or lease.

OFFICE SPACE FOR LEASE





Maltos